

# NOTICE TO MARINERS



## 060 (T) of 2020

---

Issued by Brisbane Maritime Region on 21 February 2020

**Area:** Brisbane pilotage area

**Locality:** Mooloolah River Bar

**Activity:** Dredging and shoaling

Mariners are advised that a hydrographic survey of the Mooloolah River and its coastal bar on Tuesday 18 February 2020, shows a shoal patch extending from the end of the eastern breakwater in a westerly direction past the centreline of the channel. The shoal has a least depth of approximately 1.6 metres at LAT on the entrance channel's centreline, as well as a least depth of approximately 1.2 metres at LAT on the channels eastern edge. There is a secondary shoal patch west of the channels western edge with a least depth of 2.4m at LAT. The remainder of the entrance channel generally shows depths in excess of the 2.5m design depth at LAT.

Map S11-452 attached, shows the current channel. Copies of the survey plan are available from the Sunshine Coast office of Maritime Safety Queensland at Mooloolaba.

The cutter suction dredge 'Navau' is expected to move on station in late February 2020 and commence dredging operations, weather permitting. The dredge will exhibit day shapes and lights as required by the Collision Regulations. Whilst operating the dredge master will maintain a listening watch on VHF Channels 73, 12 and 16. Mariners must carefully consider the position of the 'Navau' its floating pipeline and anchors when navigating the bar. They should contact the dredge master to ensure it is safe to transit past the dredge.

Masters of smaller recreational boats, personal watercraft, and passive craft like kayaks and canoes must remain mindful of the heightened risk to larger vessels navigating the river entrance and coastal bar. Except for entering and departing the river, these smaller vessels and passive craft should keep well clear of the coastal bar and not use it for recreational purposes.

Mariners must remain mindful that coastal bars are dynamic in nature with conditions constantly changing. Mariners must plan their crossing of the Mooloolah Bar, having careful consideration to prevailing conditions, the state of the tide, and the draught of their vessels. The coastal bar must be navigated with extreme caution.

Mariners are also reminded that the Mooloolah River entrance is defined as a coastal bar. This means that each person on board an open boat less than 4.8 metres in length must wear an appropriate life jackets while the boat is crossing the coastal bar.

**Refer to notice:**

**Cancel notice:** 007 (T) of 2020 & 047(T) of 2020

**AUS charts affected:** 235

---

Latitude and longitude positions are on WGS84 horizontal datum and are compatible with GDA94 datum.

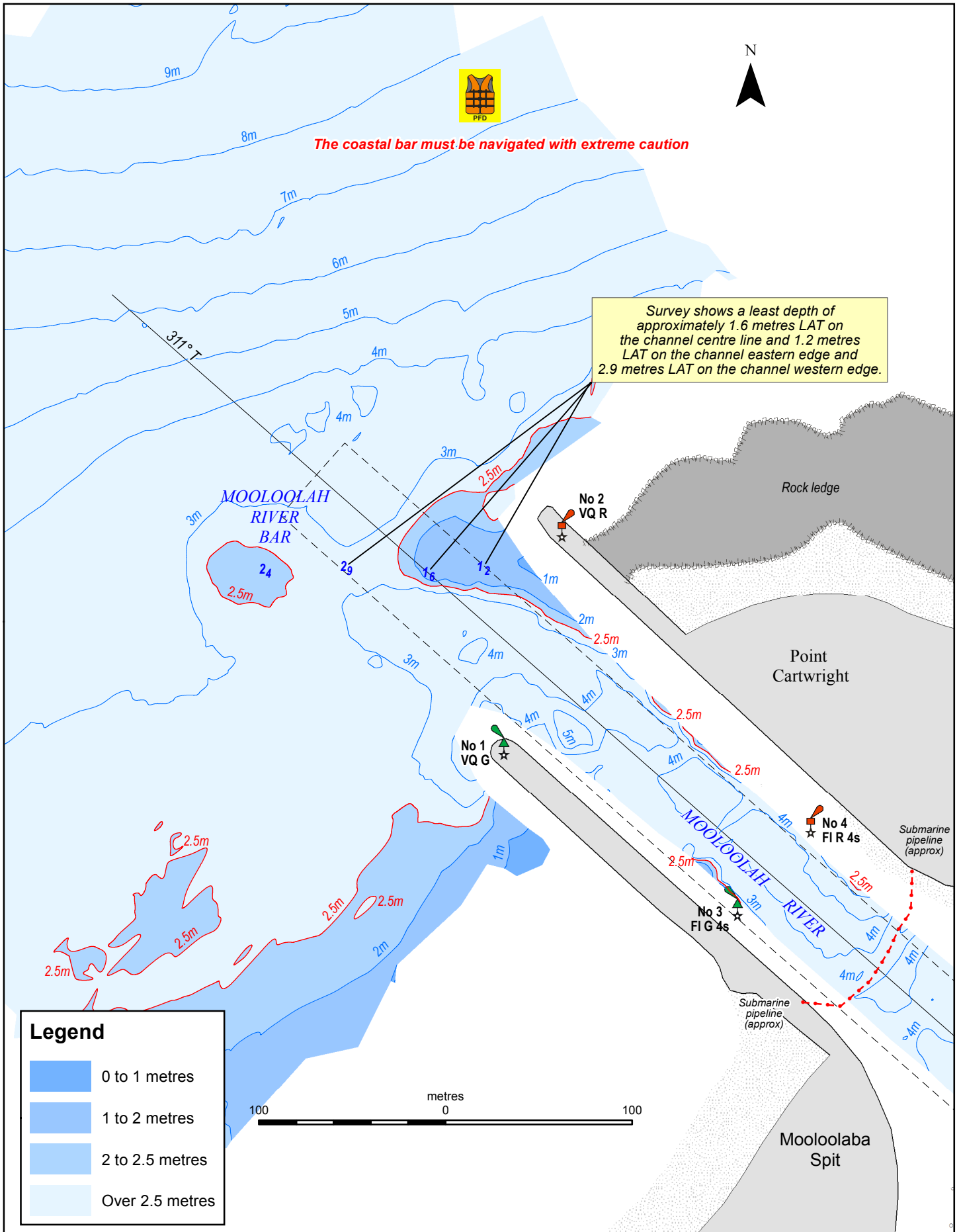
**For further information about this notice, please contact:**

The Brisbane Regional Harbour Master's office:

Phone: 07 3632 7500

Email: [vtsbrisbane@msq.qld.gov.au](mailto:vtsbrisbane@msq.qld.gov.au)

**Notice authorised by: Regional Harbour Master (Brisbane) - Maritime Safety Queensland**



To be used with appropriate NTM  
 © The State of Queensland 2020  
 (Transport and Main Roads)



Licence available to view at  
<http://creativecommons.org/licenses/by-nc-nd/4.0>

Prepared 20 February 2020  
 Maritime Safety Queensland

## QUEENSLAND NOTICE TO MARINERS

Issued by Maritime Safety Queensland

### MOOLOOLAH RIVER BAR

Surveyed 18 February 2020

QNTM updates also available  
 from [www.msq.qld.gov.au](http://www.msq.qld.gov.au)  
 Datum: GDA94 horizontal. LAT vertical  
 Map projection: UTM (MGA zone 56)

Map S11- 452



Queensland  
 Government