

NOTICE TO MARINERS



092 (T) of 2025

Issued by Brisbane Maritime Region on 14 March 2025

Area: Brisbane pilotage area
Locality: Mooloolah River bar
Activity: shoaling and dredging

Mariners are advised that:

a hydrographic survey of the Mooloolah River and its coastal bar on Thursday 13 March 2025, shows a shoal patch extending from the end of the eastern breakwater in a westerly direction across the entrance channel. The shoal has a least depth of approximately 1.5 metres at LAT within the centre white sector of the entrance channel. The shoal patch on the eastern side of the entrance channel's red sector has a least depth of 1.5 metres at LAT. The shoal patch on the western edge of the entrance channel's green sector indicated by the port entry light has a least depth of approximately 1.4 metres at LAT.

Two reference marks for guidance only have been promulgated to facilitate a possible alternative route of navigation to and from the entrance channel. The reference marks can be portrayed on automatic identification system (AIS) and electronic chart display and information system (ECDIS). Reference mark 1 (BNE MRB REF 1) positioned at 26° 40.8332' S 153° 7.8066' E, reference mark 2 (BNE MRB REF 2) positioned at 26° 40.8198' S 153° 7.8843' E. Masters of vessels must remain mindful of the heightened risk of swimmers in the area due to the proximity to Mooloolaba Beach.

Map S11-718 attached, shows the current channel. Copies of the survey plan are available from the Sunshine Coast office of Maritime Safety Queensland at Mooloolaba.

The dredge CSD Navua is on station and will be undertaking dredging operations, weather permitting. The dredge will exhibit day shapes and lights as required by the Collision Regulations. Whilst operating the dredge master will maintain a listening watch on VHF Channels 16 and 82. Mariners must carefully consider the position of the 'CSD Navua' its floating pipeline and anchors when navigating the bar. They should contact the dredge master to ensure it is safe to transit past the dredge

Masters of smaller recreational boats, personal watercraft, and passive craft like kayaks and canoes must remain mindful of the heightened risk to larger vessels navigating the river entrance and coastal bar. Except for entering and departing the river, these smaller vessels and passive craft should keep well clear of the coastal bar and not use it for recreational purposes.

Mariners must remain mindful that coastal bars are dynamic in nature with conditions constantly changing. Mariners must plan their crossing of the Mooloolah Bar, having careful consideration to prevailing conditions, the state of the tide, and the draught of their vessels. The coastal bar must be navigated with extreme caution.

Mariners are also reminded that the Mooloolah River entrance is defined as a coastal bar. This means that a lifejacket must be worn when boating alone or only with children under 12 years on an open boat less than 4.8m in length whilst underway; crossing designated coastal bars on an open ship and on an open area of a boat of any length and on certain craft; children one year or more and under 12 years are on an open boat or an open area of a boat of any length whilst underway; and night time boating, between sunset and sunrise on an open boat less than 4.8m in length whilst underway.

Refer to notice: none

Cancel notice: 055(T) of 2025

AUS charts affected: 236

ENC Cells affected: AU5MLL01

Latitude and longitude positions are on WGS84 horizontal datum and are compatible with GDA2020 datum.

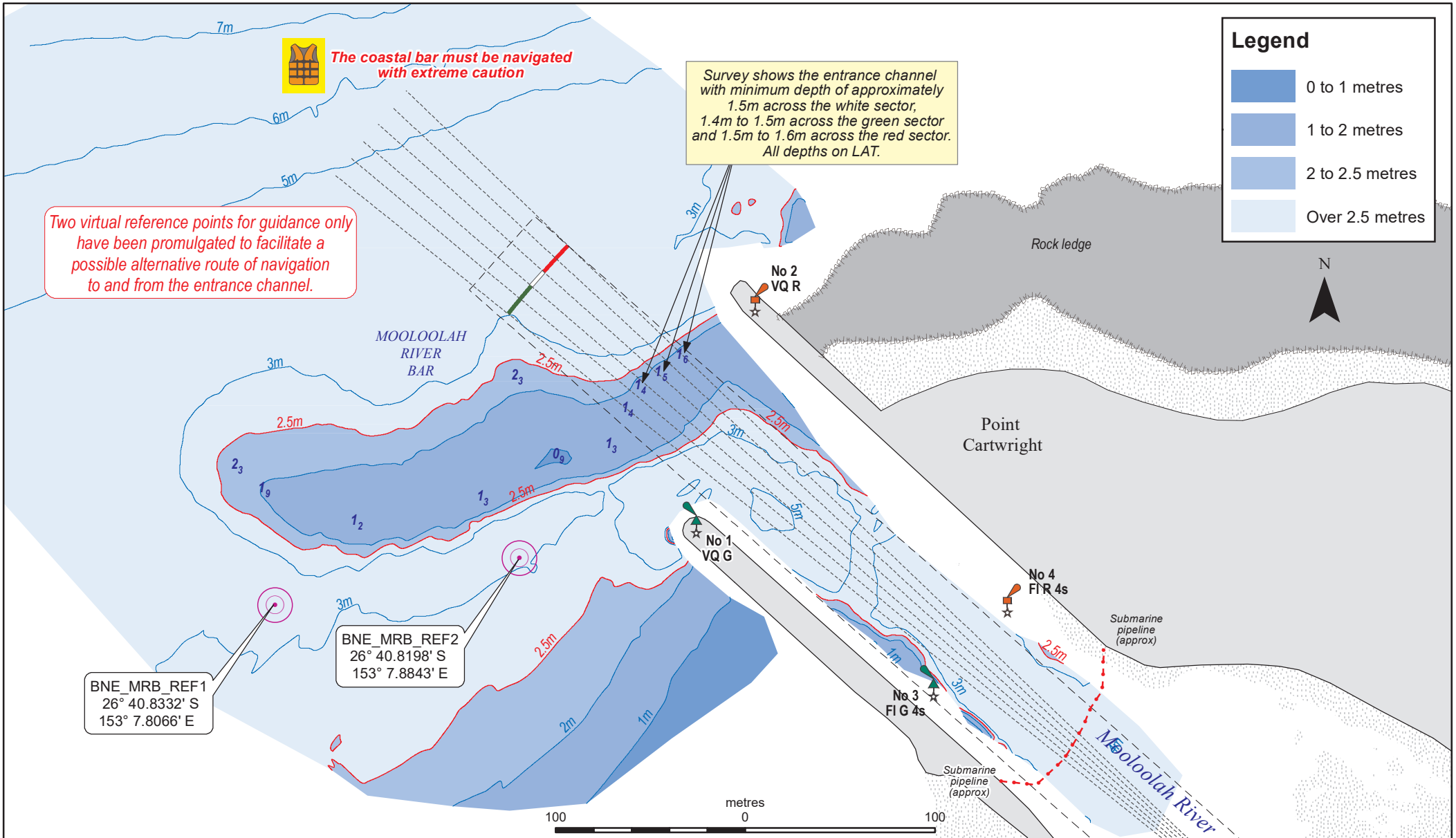
For further information about this notice, please contact:

The Brisbane Regional Harbour Master's office:

Phone: 07 3632 7500

Email: vtsbrisbane@msq.qld.gov.au

Notice authorised by: Regional Harbour Master (Brisbane) - Maritime Safety Queensland



To be used with appropriate NTM
 © The State of Queensland 2025
 Transport and Main Roads



Prepared 14 March 2025
Maritime Safety Queensland
 Port Operations and VTS - Spatial Services

QUEENSLAND NOTICE TO MARINERS

Issued by Maritime Safety Queensland

MOOLOOLAH RIVER BAR

Surveyed 13 March 2025

QNTM updates also available
 from www.msq.qld.gov.au
 Datum: GDA2020 horizontal. LAT vertical
 Map projection: UTM (MGA zone 56)

Map S11-718

