

# NOTICE TO MARINERS



## 136 (T) of 2021

---

Issued by Brisbane Maritime Region on 16 April 2021

**Area:** Brisbane pilotage area  
**Locality:** Mooloolah River Bar  
**Activity:** Shoaling and dredging

Mariners are advised that:

a hydrographic survey of the Mooloolah River and its coastal bar on Thursday 15 April 2021, shows a shoal patch extending from the end of the eastern breakwater in a westerly direction across the entrance channel. The shoal has a least depth of approximately 1.2 metres at LAT within the centre white sector of the entrance channel. The shoal patch on the eastern side of the entrance channel's red sector has least depth of approximately 1.4 metres at LAT. The shoal patch on the western edge of the entrance channel's green sector indicated by the starboard entry light has a least depth of approximately 1.3 metres at LAT. The shoal patch extends west of the entrance channel and has a least depth of approximately 1.9 metres at LAT within the limited area of survey.

Map S11-507 attached, shows the current channel. Copies of the survey plan are available from the Sunshine Coast office of Maritime Safety Queensland at Mooloolaba.

The dredge CSD Navua is on station and may be conducting dredging operations, weather permitting. The dredge will exhibit day shapes and lights as required by the Collision Regulations. Whilst operating the dredge master will maintain a listening watch on VHF Channels 73, 12 and 16. Mariners must carefully consider the position of the 'CSD Navua' its floating pipeline and anchors when navigating the bar. They should contact the dredge master to ensure it is safe to transit past the dredge.

Masters of smaller recreational boats, personal watercraft, and passive craft like kayaks and canoes must remain mindful of the heightened risk to larger vessels navigating the river entrance and coastal bar. Except for entering and departing the river, these smaller vessels and passive craft should keep well clear of the coastal bar and not use it for recreational purposes.

Mariners must remain mindful that coastal bars are dynamic in nature with conditions constantly changing. Mariners must plan their crossing of the Mooloolah Bar, having careful consideration to prevailing conditions, the state of the tide, and the draught of their vessels. The coastal bar must be navigated with extreme caution.

Mariners are also reminded that the Mooloolah River entrance is defined as a coastal bar. This means that each person on board an open boat less than 4.8 metres in length must wear an appropriate life jackets while the boat is crossing the coastal bar.

**Refer to notice:** none

**Cancel notice:** 107(T) of 2021

**AUS charts affected:** AUS235

---

Latitude and longitude positions are on WGS84 horizontal datum and are compatible with GDA94 datum.

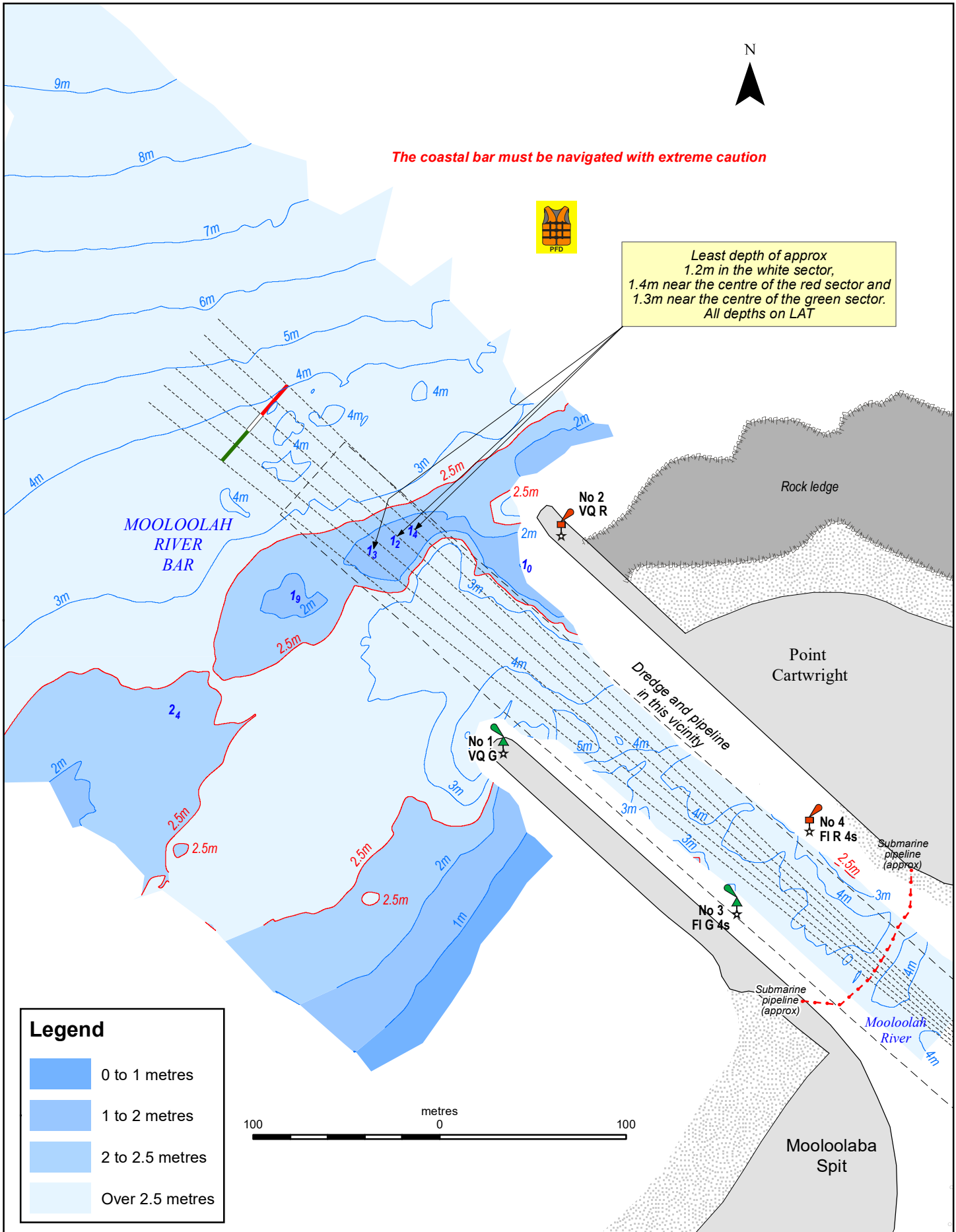
**For further information about this notice, please contact:**

The Brisbane Regional Harbour Master's office:

Phone: 07 3632 7500

Email: [vtsbrisbane@msq.qld.gov.au](mailto:vtsbrisbane@msq.qld.gov.au)

**Notice authorised by:** Regional Harbour Master (Brisbane) - Maritime Safety Queensland

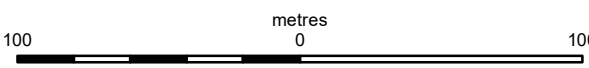


The coastal bar must be navigated with extreme caution

Least depth of approx  
1.2m in the white sector,  
1.4m near the centre of the red sector and  
1.3m near the centre of the green sector.  
All depths on LAT

**Legend**

	0 to 1 metres
	1 to 2 metres
	2 to 2.5 metres
	Over 2.5 metres



To be used with appropriate NTM  
© The State of Queensland 2021  
(Transport and Main Roads)



Prepared 16 April 2021  
Maritime Safety Queensland  
Spatial Services

**QUEENSLAND NOTICE TO MARINERS**  
Issued by Maritime Safety Queensland  
**MOOLOOLAH RIVER BAR**  
Surveyed 15 April 2021

QNTM updates also available  
from [www.msq.qld.gov.au](http://www.msq.qld.gov.au)  
Datum: GDA94 horizontal, LAT vertical  
Map projection: UTM (MGA zone 56)

**Map S11- 507**

