

NOTICE TO MARINERS



191 of 2020

Issued by Brisbane Maritime Region on 1 June 2020

Area: Brisbane pilotage area

Locality: Mooloolah River Bar

Activity: Aid to Navigation replacement

Mariners are advised that both the rear lead light in the Mooloolah River (F Bu(FY day)) in position latitude 26° 41.006' S, longitude 153° 08.158' E and the front lead light (F Bu(FY day)) in position latitude 26° 40.935' S, longitude 153° 08.814' E have been permanently extinguished.

A Port Entry Sector Light (PEL) has been established on the position of the former front lead at latitude 26° 40.935' S, longitude 153° 08.814' E with the below characteristics by day and night

Starboard outer Sector 128.65° T to 129.71° T VQG 0.6s

Starboard inner Sector 129.71° T to 130.64° T QG 1s

Centre Sector 130.64° T to 131.68° T Fixed White

Port inner Sector 131.68° T to 132.67° T QR 1s

Port outer Sector 132.67° T to 133.65° T VQR 0.6s

Map S11-459-2 attached, shows the Port Entry Sector Light arrangement.

The Port lateral light on the former front lead at latitude 26° 40.935' S, longitude 153° 08.814' E remains unchanged Fl R 4s however is obscured through the arc of the PEL from 128.65° T to 133.65° T.

Refer to notice:

Cancel notice: 175(T) of 2020

AUS charts affected: 235

Latitude and longitude positions are on WGS84 horizontal datum and are compatible with GDA94 datum.

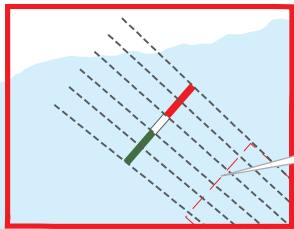
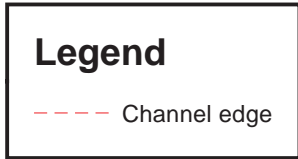
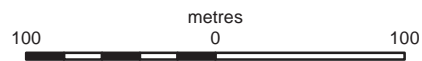
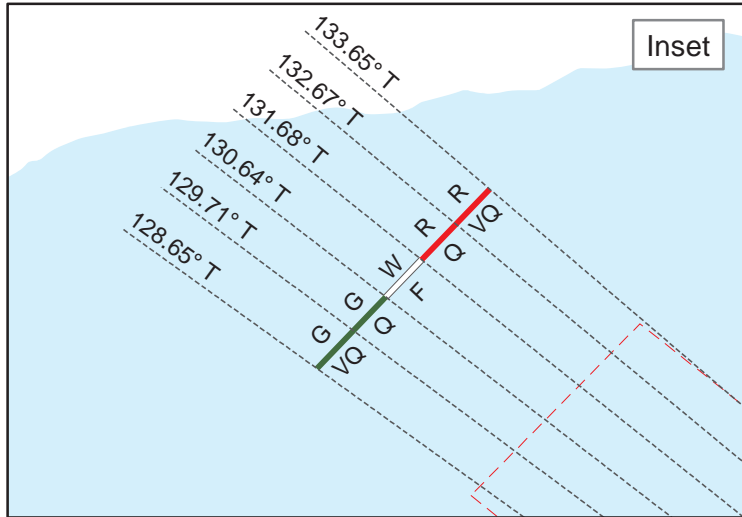
For further information about this notice, please contact:

The Brisbane Regional Harbour Master's office:

Phone: 07 3632 7500

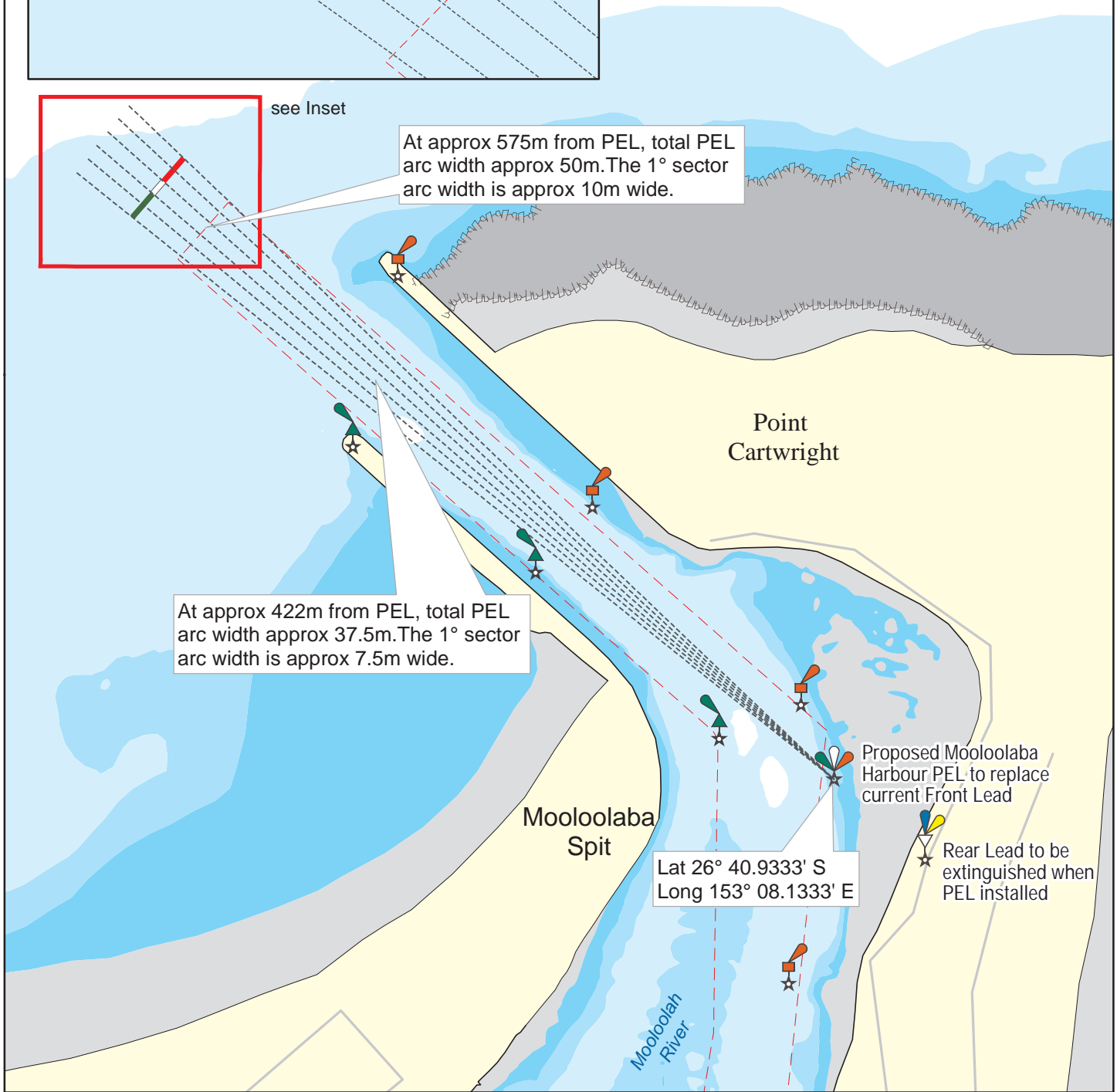
Email: vtsbrisbane@msq.qld.gov.au

Notice authorised by: Regional Harbour Master (Brisbane) - Maritime Safety Queensland



At approx 575m from PEL, total PEL arc width approx 50m. The 1° sector arc width is approx 10m wide.

At approx 422m from PEL, total PEL arc width approx 37.5m. The 1° sector arc width is approx 7.5m wide.



To be used with appropriate NTM
© The State of Queensland 2020
(Transport and Main Roads)



Licence available to view at
<http://creativecommons.org/licenses/by-nc-nd/4.0>
Prepared 29 May 2020
Maritime Safety Queensland

QUEENSLAND NOTICE TO MARINERS
Issued by Maritime Safety Queensland
**MOOLOOLABA HARBOUR
PEL INSTALLATION
MOOLOOLABA**

QNTM updates also available from www.msq.qld.gov.au
Datum: GDA94 horizontal. LAT vertical
Map projection: UTM (MGA zone 56)

Map S11-459-2



**Queensland
Government**