

NOTICE TO MARINERS



511 (T) of 2018

Issued by Brisbane Maritime Region on 21 December 2018

Area: Brisbane pilotage area

Locality: Mooloolah River Bar

Activity: Shoaling

Mariners are advised that a hydrographic survey of the Mooloolah River and its coastal bar on Thursday 20 December 2018, shows the entrance channel with depths generally in excess of the 2.5m design depth at LAT, with 2.7 metres LAT near the centreline. There is a shoal extending from the eastern edge towards the centreline with least depth of 0.9 metres at LAT towards the eastern edge and 2.1 metres depth at LAT towards the centreline.

Map S11-411-1 attached, shows the current channel and the extent of the shoal. Copies of the survey plan are available from the Sunshine Coast office of Maritime Safety Queensland at Mooloolaba.

Mariners should navigate with extreme caution in the area and also remain mindful of their wash and the operational speed limit of 6 knots in the vicinity of anchored vessels.

Masters of smaller recreational boats, personal watercraft, and passive craft like kayaks and canoes must remain mindful of the heightened risk to larger vessels navigating the river entrance and coastal bar. Except for entering and departing the river, these smaller vessels and passive craft should keep well clear of the coastal bar and not use it for recreational purposes.

Mariners must remain mindful that coastal bars are dynamic in nature with conditions constantly changing. Mariners must plan their crossing of the Mooloolah Bar, having careful consideration to prevailing conditions, the state of the tide, and the draught of their vessels. The coastal bar must be navigated with extreme caution.

Mariners are also reminded that the Mooloolah River entrance is defined as a coastal bar. This means that each person on board an open boat less than 4.8 metres in length must wear an appropriate life jackets while the boat is crossing the coastal bar.

Refer to notice: 462(T)

Cancel notice: 462(T)

AUS charts affected: AUS235

Latitude and longitude positions are on WGS84 horizontal datum and are compatible with GDA94 datum.

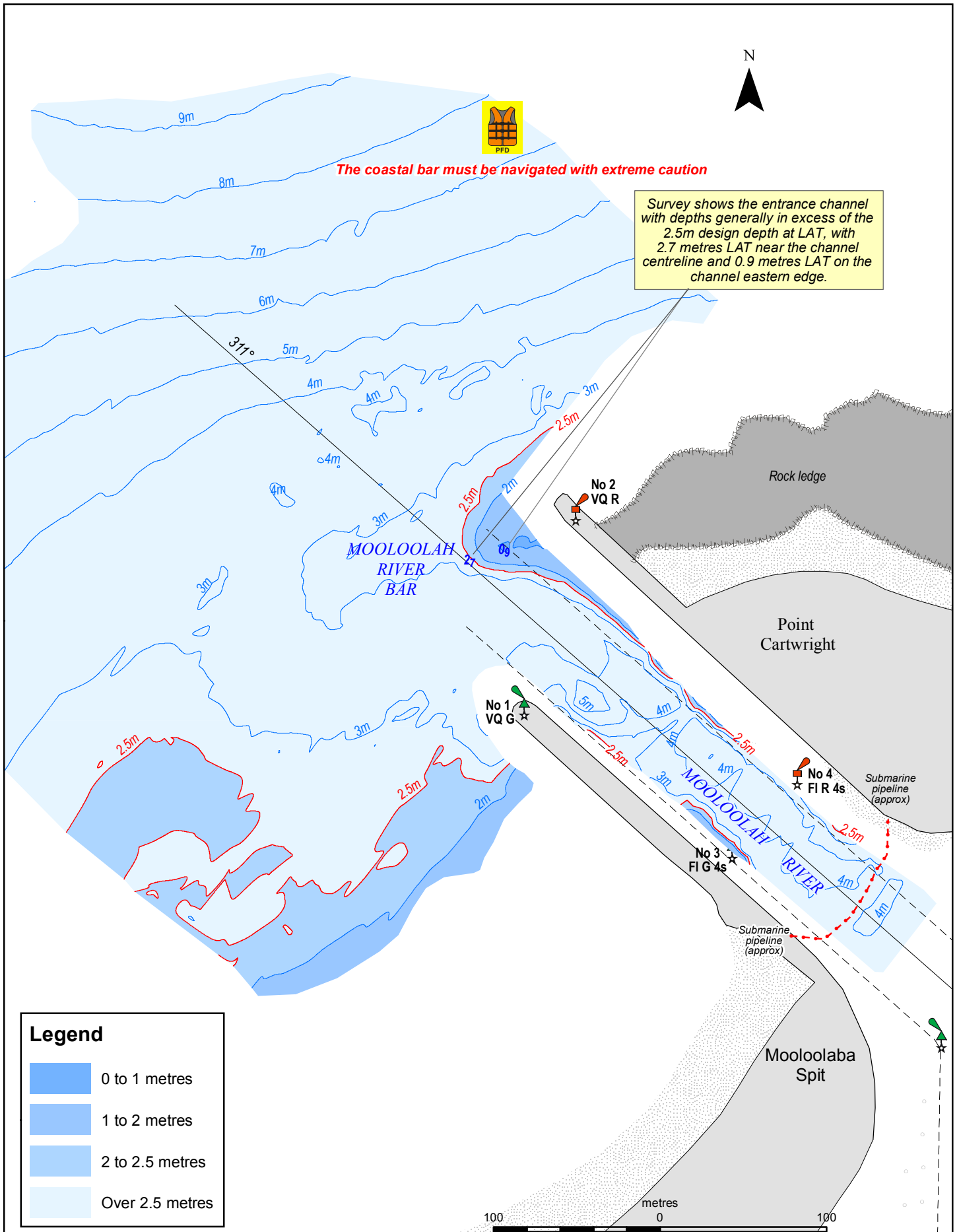
For further information about this notice, please contact:

The Brisbane Regional Harbour Master's office:

Phone: 07 3632 7500

Email: vtsbrisbane@msq.qld.gov.au

Notice authorised by: Regional Harbour Master (Brisbane) - Maritime Safety Queensland



To be used with appropriate NTM
 © The State of Queensland 2018
 (Transport and Main Roads)



Licence available to view at
<http://creativecommons.org/licenses/by-nc-nd/4.0/>

Prepared 21 December 2018
 Maritime Safety Queensland

QUEENSLAND NOTICE TO MARINERS

Issued by Maritime Safety Queensland

MOOLOOLAH RIVER BAR

Surveyed 20 December 2018

QNTM updates also available
 from www.msq.qld.gov.au
 Datum: GDA94 horizontal. LAT vertical
 Map projection: UTM (MGA zone 56)

Map S11-414-1



Queensland
 Government