

# NOTICE TO MARINERS



## 204 (T) of 2019

---

Issued by Brisbane Maritime Region on 10 May 2019

**Area:** Brisbane pilotage area

**Locality:** Mooloolah River Bar

**Activity:** Shoaling

Mariners are advised that a hydrographic survey of the Mooloolah River and its coastal bar on Thursday 9 May 2019, shows a shoal patch extending from the end of the eastern breakwater in a westerly direction past the centreline of the channel. The shoal has a least depth of approximately 2 metres at LAT on the entrance channel's centreline, as well as a least depth of approximately 1.7 metres at LAT on the channels eastern edge. There is deeper water to the west of the centreline of the channel. The survey shows the entrance channel with depths generally in excess of the 2.5m design depth at LAT. An additional sand shoal is located to the west of the entrance channel and has a minimum depth of approximately 2.1 metres LAT.

Map S11-432 attached, shows the current channel and the extent of the shoal. Copies of the survey plan are available from the Sunshine Coast office of Maritime Safety Queensland at Mooloolaba.

Mariners should navigate with extreme caution in the area and also remain mindful of their wash and the operational speed limit of 6 knots in the vicinity of anchored vessels.

Masters of smaller recreational boats, personal watercraft, and passive craft like kayaks and canoes must remain mindful of the heightened risk to larger vessels navigating the river entrance and coastal bar. Except for entering and departing the river, these smaller vessels and passive craft should keep well clear of the coastal bar and not use it for recreational purposes.

Mariners must remain mindful that coastal bars are dynamic in nature with conditions constantly changing. Mariners must plan their crossing of the Mooloolah Bar, having careful consideration to prevailing conditions, the state of the tide, and the draught of their vessels. The coastal bar must be navigated with extreme caution.

Mariners are also reminded that the Mooloolah River entrance is defined as a coastal bar. This means that each person on board an open boat less than 4.8 metres in length must wear an appropriate life jackets while the boat is crossing the coastal bar.

**Refer to notice:** 174(T) of 2019 and 184(T) of 2019

**Cancel notice:** 174(T) of 2019 and 184(T) of 2019

**AUS charts affected:** 235

---

Latitude and longitude positions are on WGS84 horizontal datum and are compatible with GDA94 datum.

**For further information about this notice, please contact:**

The Brisbane Regional Harbour Master's office:

Phone: 07 3632 7500

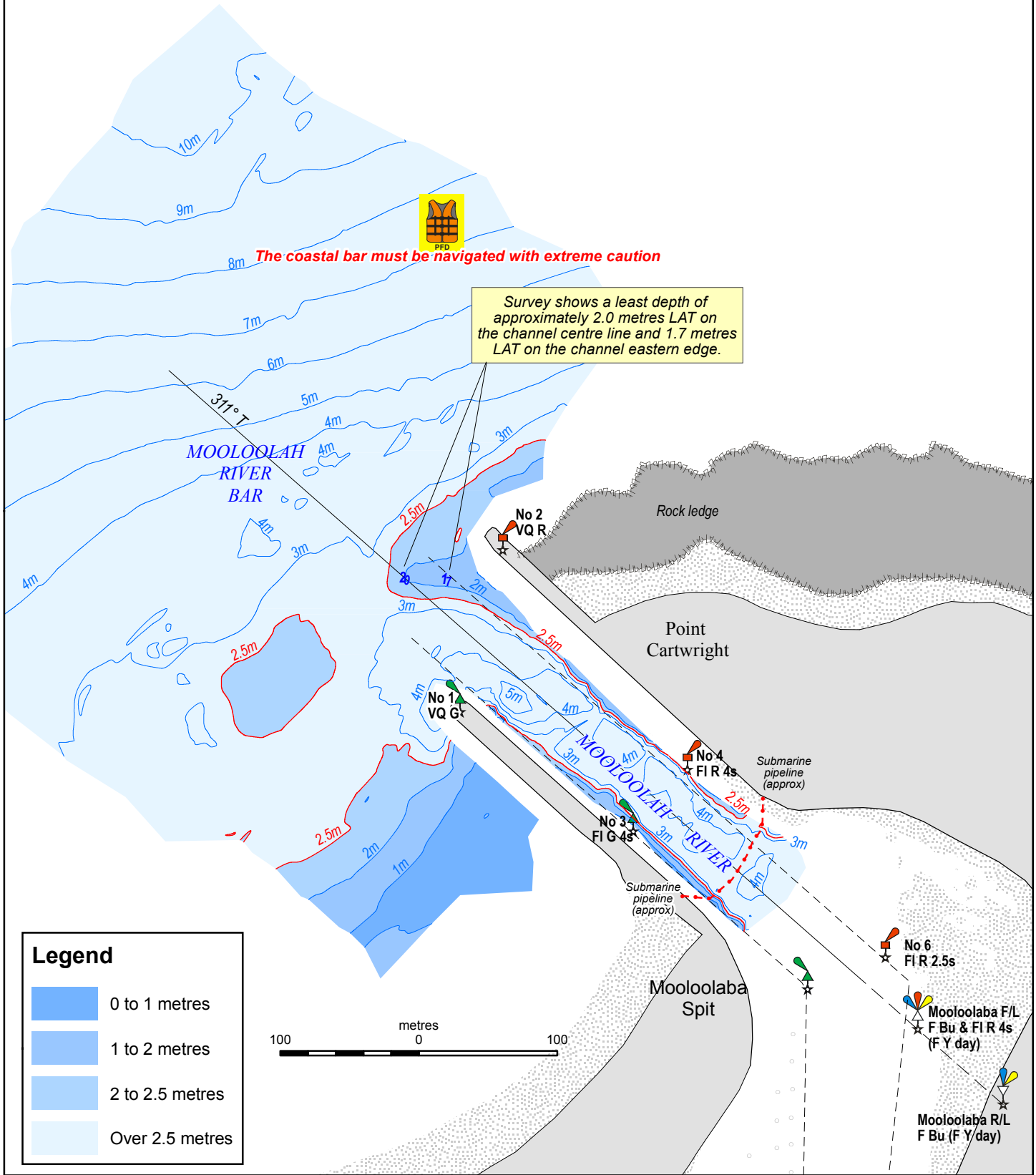
Email: [vtsbrisbane@msq.qld.gov.au](mailto:vtsbrisbane@msq.qld.gov.au)

**Notice authorised by: Regional Harbour Master (Brisbane) - Maritime Safety Queensland**




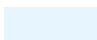


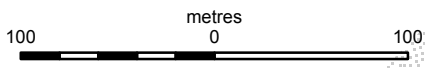
**The coastal bar must be navigated with extreme caution**

Survey shows a least depth of approximately 2.0 metres LAT on the channel centre line and 1.7 metres LAT on the channel eastern edge.



**Legend**

-  0 to 1 metres
-  1 to 2 metres
-  2 to 2.5 metres
-  Over 2.5 metres



To be used with appropriate NTM  
© The State of Queensland 2019  
(Transport and Main Roads)



Licence available to view at  
<http://creativecommons.org/licenses/by-nc-nd/4.0/>

Prepared 10 May 2019  
Maritime Safety Queensland

# QUEENSLAND NOTICE TO MARINERS

Issued by Maritime Safety Queensland

## MOOLOOLAH RIVER BAR

Surveyed 9 May 2019

QNTM updates also available from [www.msq.qld.gov.au](http://www.msq.qld.gov.au)  
Datum: GDA94 horizontal. LAT vertical  
Map projection: UTM (MGA zone 56)

**Map S11- 432**



**Queensland Government**