

NOTICE TO MARINERS



326 (T) of 2021

Issued by Brisbane Maritime Region on 24 August 2021

Area: Brisbane pilotage area
Locality: Mooloolah River Bar
Activity: Shoaling and dredging

Mariners are advised that:

a hydrographic survey of the Mooloolah River and its coastal bar on Monday 23 August 2021, shows the entrance channel generally has depths in excess of the 2.5m design depth at LAT. However, there is a shoal patch west of the entrance channel which has a least depth of approximately 2.2 metres at LAT within the limited area of survey.

Map S11-538 attached, shows the current channel. Copies of the survey plan are available from the Sunshine Coast office of Maritime Safety Queensland at Mooloolaba.

The dredge CSD Navua is currently on station and is commencing dredging operations, weather permitting. The dredge will exhibit day shapes and lights as required by the Collision Regulations. Whilst operating the dredge master will maintain a listening watch on VHF Channels 73, 12 and 16. Mariners must carefully consider the position of the 'CSD Navua' its floating pipeline and anchors when navigating the bar. They should contact the dredge master to ensure it is safe to transit past the dredge.

Masters of smaller recreational boats, personal watercraft, and passive craft like kayaks and canoes must remain mindful of the heightened risk to larger vessels navigating the river entrance and coastal bar. Except for entering and departing the river, these smaller vessels and passive craft should keep well clear of the coastal bar and not use it for recreational purposes.

Mariners must remain mindful that coastal bars are dynamic in nature with conditions constantly changing. Mariners must plan their crossing of the Mooloolah Bar, having careful consideration to prevailing conditions, the state of the tide, and the draught of their vessels. The coastal bar must be navigated with extreme caution.

Mariners are also reminded that the Mooloolah River entrance is defined as a coastal bar. This means that each person on board an open boat less than 4.8 metres in length must wear an appropriate life jackets while the boat is crossing the coastal bar.

Refer to notice: none

Cancel notice: 315(T) of 2021

AUS charts affected: 235

Latitude and longitude positions are on WGS84 horizontal datum and are compatible with GDA94 datum.

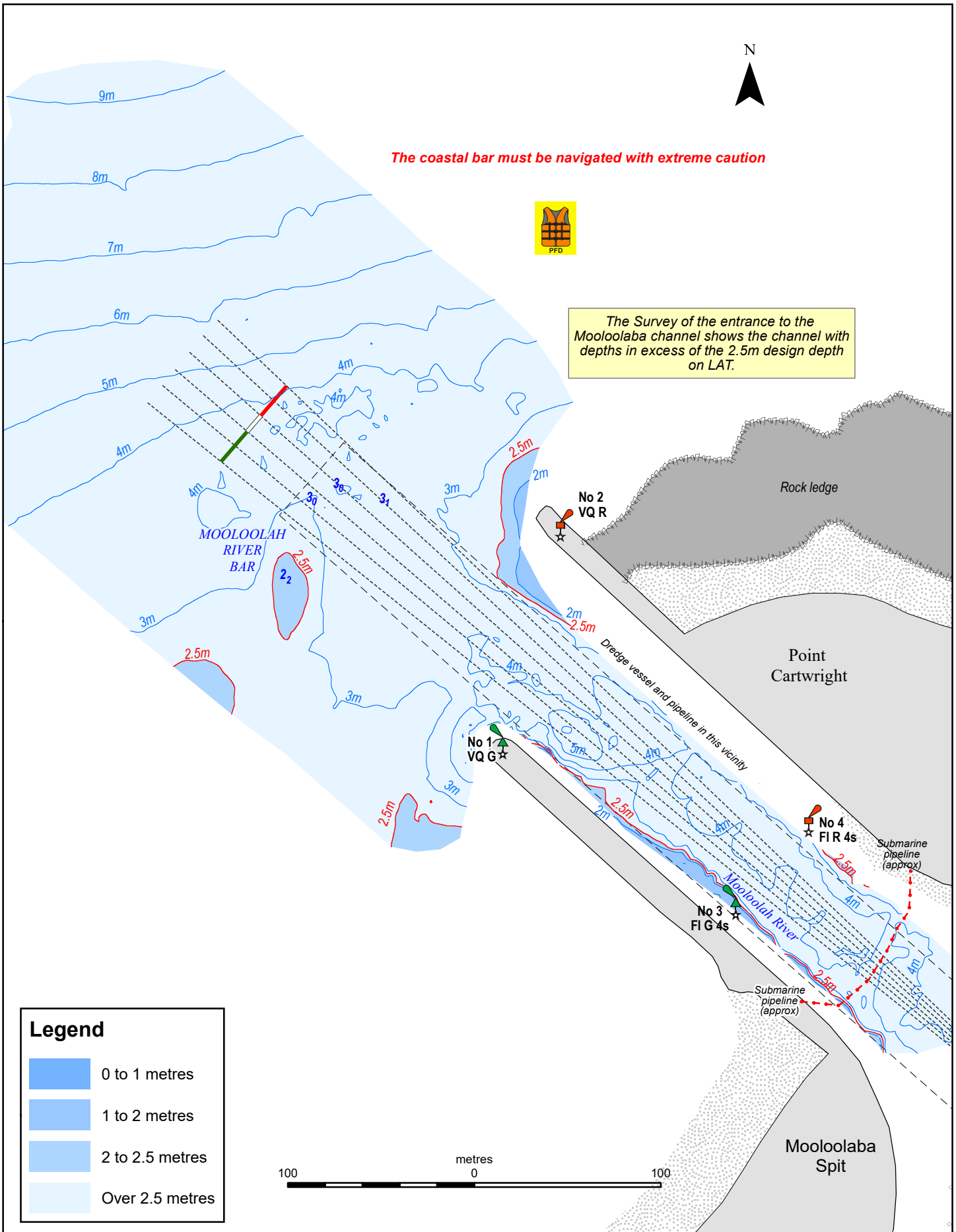
For further information about this notice, please contact:

The Brisbane Regional Harbour Master's office:

Phone: 07 3632 7500

Email: vtsbrisbane@msq.qld.gov.au

Notice authorised by: Regional Harbour Master (Brisbane) - Maritime Safety Queensland



The coastal bar must be navigated with extreme caution



The Survey of the entrance to the Mooloolaba channel shows the channel with depths in excess of the 2.5m design depth on LAT.

Legend	
	0 to 1 metres
	1 to 2 metres
	2 to 2.5 metres
	Over 2.5 metres

To be used with appropriate NTM
 © The State of Queensland 2021
 (Transport and Main Roads)



Prepared 24 August 2021
 Maritime Safety Queensland
 Spatial Services

QUEENSLAND NOTICE TO MARINERS
 Issued by Maritime Safety Queensland
MOOLOOLAH RIVER BAR
 Surveyed 23 August 2021

QNTM updates also available
 from www.msq.qld.gov.au
 Datum: GDA94 horizontal. LAT vertical
 Map projection: UTM (MGA zone 56)

Map S11- 538

