

MOOLOOLABA YACHT CLUB

NOTICE OF RACE for SAILING SEASON 2024/2025

Races Covered by this Notice of Race will be those races designated as club events in the MYC Sailing Calendar 2024/2025 (Sailing Calendar).

1. ORGANISING AUTHORITY

The Organising Authority for all events will be the Mooloolaba Yacht Club Ltd (MYC) Sailing documents will be published on MYC website: www.mooloolabayachtclub.com.au

2. RULES

- 2.1 All races will be governed by the rules as defined in the current Australian Sailing (AS), Racing Rules of Sailing (RRS).
- 2.2 The current AS-Special-Regulations-Part-1-Keelboats Part 1, except where modified by these Sailing Instructions.
- 2.3 Skippers and Owners are reminded of AS Special Regulations Part 1, Rule 1.01.2 indicating the Special Regulations are supplementary to requirements of governmental authority, the Rules of Racing, and the rules of class associations and rating systems.
- 2.4 Between the hours of sunset and sunrise, the International Regulations for Preventing Collisions at Sea (IRPCS) shall replace the rules of Part 2 When Boats Meet.
- 2.5 The events / series organized by the Organizing Authority and designated in the Sailing Calendar may include:
 - (i) Sunday Afternoon Members' Sail (SAMS)
 - (ii) Wednesday Afternoon Members' Sail (WAMS) – (Suspended for 2024-2025)
 - (iii) Blue Water Series (BWS)
 - (iv) Women's Helm Series (WHS)
 - (v) Short Course Races (SCS)
 - (vi) River Races– for additional information see Attachment F: RIVER RACES - NOTICE OF RACE.
- 2.6 The Safety Category for all events held in Mooloolaba Bay will be AS Special Regulations Part 1 Category 4.
- 2.7 Skippers are responsible for ensuring ALL persons on the boat are Active Sailing Members of MYC or other affiliated AS club. All visitors, guests and non-sailing MYC members wishing to sail must obtain a SailPass online or present to the MYC Clubroom, prior to boarding a vessel, to register for a Sail Pass and to be assigned a vessel.
Skippers preferring to sign on from the water must complete a crew list using the chosen MYC Race Management System, currently SailSys or text the number of Persons on Board (POB) as well as the names of each person on board to the MYC mobile 0413 227 013.
- 2.10 All participants must conduct themselves in a respectful manner and must show courtesy, consideration and respect to all others

3. ADVERTISING

Boats and Crew shall comply with RRS 6 in accordance with [World Sailing Regulation](#) - Advertising Code. Boats may be required to display advertising chosen and supplied by the Organising Authority.

4. ELIGIBILITY AND ENTRY

- 4.1 Events are open to all boats on the MYC Boat Register and boats on the register of clubs or other organisations affiliated with Australian Sailing (AS).
- 4.2 All skippers and crew shall be members of MYC or bona fide visitors (RRS 46 and 75). Visitors who are not already a member of a AS affiliated club must purchase a SailPass. It shall be the responsibility of the person in charge of a boat to ensure that for each race all crew and visitors on board comply with these rules.
- 4.3 Entry for all events should preferably be completed using the chosen MYC Race Management System, currently SailSys. All crew and visitors must be entered. The Sailing Fee may be paid online or in the MYC Clubroom.
- 4.4 Alternatively, entry to an event can be made in the MYC Clubroom from the sign-on time published for the event.
- 4.5 For all series or other events, eligible boats must have provided the required documentation from the following list, by SailsSys, email to MYC or by lodging it in person with the OOD at sign-on on the day of the race -
 - (a) Proof of membership of an AS affiliated club:
 - (b) Entry fee.
 - (c) Certified Category 4, AS Special Regulations Equipment Audit Form (2021-)
 - (d) Fully completed crew list.
 - (e) Copy of boat insurance (Certificate of Currency).
- 4.6 All boats not on the MYC Boat Register will provide the skipper's name, boat type, boat name and sail number to MYC not less than 1 hour before race Start Time.
- 4.7 Eligible boats entered for BWS races must sign-on in person in the MYC Clubroom, pay the appropriate fee, and attend the race briefing from the Officer of the Day (OOD) on the day of the race at the time indicated in the SIs Attachment C
- 4.8 For the WHS races, boats wishing to be included in the results for this series shall have a female helm throughout the designated race.

5. FEES

Club members may enter a boat into an individual SAMS, WHS, BWS, and Short Course Races or River Races by paying the appropriate sailing fee to MYC using the chosen MYC Race Management System, currently SailSys, or by payment in the MYC Clubroom.

6. SCHEDULE

The schedule of races will be as per the Sailing Calendar available on the MYC website. As necessary, amendments to the Sailing Calendar will be updated to MYC website.

7. SAILING INSTRUCTIONS

Sailing Instructions (SIs) for club events in the MYC fleet sailing season will be published on MYC website.

8. COURSES

The Courses will be as defined in the Supplementary Sailing Instructions (SSIs).

9. PENALTY SYSTEM

The penalty for breaking a rule of Part 2 shall be a One Turn Penalty (one tack and one gybe in the same direction). This changes RRS 44.1.

10. HANDICAPPING

- 10.1 The official Performance Handicaps will be initially derived and varied using the chosen MYC Race Management System, currently SailSys. The handicap list for each racing series may be issued by the Sailing Committee (SC).
- 10.2 The SC at its absolute discretion, reserves the right to alter or adjust any performance handicap found to be incorrectly published or incorrectly calculated prior to the scheduled starting time of the race concerned.
- 10.3 The SC or its nominee may at its absolute discretion, review any boat's handicap where it is of the opinion that due to anomaly, error or change of racing trim or equipment, the handicap is considered unfair or unreasonable.
- 10.4 Allocated handicaps will not be the subject of protest or dispute. Requests for review of a handicap must be in writing to the SC, stating specific reason(s) for the request. Any changes will not be retrospective.
- 10.5 All club races will be conducted under a Performance Handicap System (PHS) based on Corrected Elapsed Time handicapping using the chosen MYC Race Management System. Three (3) or more boats must be entered to constitute a race and for handicaps to be adjusted. Before a boat has completed its third race handicaps for club races will be provisional and subject to change by the SC or its nominee. Final handicaps for club races will be allocated after a boat has completed its third race.
- 10.6 Social Sailing has been introduced to assist members not wanting to race, See the Sailing Calendar for details and social sailing days.
- 10.7 Additional divisions may be declared if there are sufficient entries for IRC, OMR and/or SMS.

11. SCORING

- 11.1 The Low Point System, RRS Appendix A will apply except that the number of discards allowed will be as amended in 11.2.
- 11.2 Each boat's series score will be the total of her race scores excluding the specified worst scores. The number of discards for scored races will be as follows:

Exclude Y after X races in a Series.

	SAMS, BWS, WHS, SCS				
X Races	4	9	12	17	21
Y Discards	1	2	3	4	5

- 11.3 Competitors who join a Series after one or more races have been run will be awarded a DNC for each earlier race.
- 11.4 Race scores will be as per RRS A5.3 except for Boats that Did Not Come to the Start Area (DNC) will be scored points for the finishing place two more than the number of boats that came to the starting area. This changes RRS A5.3.
- 11.5 Race scores will be as per RRS A5.3 except for Boats that have failed to enter the race using either: the chosen MYC Race Management System,
or directly signing on with a full crew list in the MYC clubroom will be recorded as NCL (No Crew List). NCL = DNS and will be scored points for the finishing place one more than the number of boats that came to the starting area. This changes RRS A5.3.
- 11.6 The owner of a boat representing the MYC in an event run by another Organizing Authority, or being unable to sail due to volunteering commitments **may** apply to the MYC Sailing Committee prior to the race for average points to be applied. Where granted, average points will be applied using the chosen MYC Race Management System. This changes RRS A4.

- 11.7 To be eligible for series points each boat shall sign off confirming their Finish Time by either: radioing in their Finish Time on VHF 77 or otherwise as indicated by the OOD.
- to MYC Radio Base.
 - MYC Race Control, or
 - sending a Text Message (SMS) to the OOD mobile as advised at sign on, within 45 minutes of their Finish Time and no later than 15 minutes after the last boat finishes. Boats not doing so will be scored DNF.

12. RADIO COMMUNICATIONS

- 12.1 All boats shall carry a marine band VHF transceiver capable of receiving and transmitting on Australian marine channels. Boats shall use the radio to sign on, report retirement from racing and may use the radio to report finish time or to request assistance in an emergency. No other private transmissions are permitted by competing boats during the racing day from the first warning signal until the end of the last race of the day. The Race Committee may use the radio to advise competitors of race information. This restriction applies to mobile phones.
- 12.2 Mooloolaba Coast Guard may monitor Channels 16 and 73 during races.
- 12.3 All radio transmissions relating to MYC fleet racing will be on VHF 77 or otherwise as indicated by the OOD.
- 12.4 All skippers are encouraged to install a cockpit speaker for VHF radio or carry a waterproof handheld VHF in the cockpit or as required by AS Special Regulations Part 1 For Racing Boats in accordance with the race category,
- 12.5 The OOD call sign is **"MYC Race Control"**.
- 12.6 Start Boat call sign is **"Start Boat"**.
- 12.7 MYC Base call sign is **"MYC Radio Base"**.

13. MYC ANNUAL PRIZES

- The Blue Water Series
 - Women's Helm Series – awarded to the boat which wins the WHS.
 - Hawkwind Trophy (this trophy is awarded to the primary helm on the winning boat in the specified Hawkwind Trophy race. The recipient must be an Active MYC member.)
 - Short Course Series
 - WAMS Series
 - SAMS Series
 - The Noosa Cup.
- Prizes for races may be awarded for each race and series.

14. RISK STATEMENT: DISCLAIMER OF LIABILITY

Competitors participate in MYC fleet races entirely at their own risk See RRS 3: stating: 'The responsibility for a boat's decision to participate in a race or to continue to race is hers alone.'

By participating in this event each competitor agrees and acknowledges that sailing is a potentially dangerous activity with inherent risks. These risks include but not limited to strong winds and rough seas, sudden changes in weather, failure of equipment, boat handling errors, poor seamanship by other boats, loss of balance on an unstable platform and fatigue resulting in increased risk of injury.

Inherent in the sport of sailing is the risk of permanent, catastrophic injury or death by drowning, trauma, hypothermia, or other causes.

Decision to Race: The MYC will not accept any liability for material damage or personal injury, or death sustained in conjunction with or prior to, during, or after a race.

All those taking part in these races are reminded of their obligations as set out in AS Special Regulations Clause 1.02 "Owner's Responsibility". Attention is drawn to RRS 4, (Acceptance of the Rules).

15. INSURANCE

All boats shall carry Public Liability Insurance of not less than AUD\$10 million.

16. SPECIAL CONDITIONS

- 16.1 While racing in any MYC fleet racing events, no anchors shall be carried on deck forward of the stem or with any part protruding outboard. Boats found to do so shall be scored as DNS. The primary anchor shall be carried assembled and attached to the ground tackle.
- 16.2 Use of autopilot is permitted. This changes RRS 52.
- 16.3 Minimum crew in any boat shall be two persons.
- 16.4 A boat may use prohibited propulsion after the Preparatory Signal to arrive at the start line provided it carries out a 360-degree turn, keeping clear of all other boats, after ceasing to use such propulsion and before starting (Changes RRS 42.1).
- 16.5 Skippers and Owners are reminded of AS Special Regulations Part 1,1.02, Responsibility of Person in Charge, outlining their responsibilities for ensuring that their boat is adequate and safe. Skippers are responsible for ensuring that their boat complies with equipment requirements as specified by the race Safety Category. Equipment audits may be made available throughout the sailing season for boats requesting a review of their compliance. Safety Audits are valid for 12 months following the date of a certified audit. Any boat failing to comply with equipment requirements may be subject to protest by the Race Committee.
- 16.6 **Until all boats have completed a race each boat in that race is required to act as a safety vessel for all other boats in that race in the case that assistance is required.**
- 16.7 A decision to race on any given day does not relieve any competitor of his/her obligation under RRS Fundamental RRS 3, Decision to Race.
- 16.8 Members are requested to fly the MYC pennant on their vessel when competing in MYC fleet events.

17. AQUATIC EVENT AUTHORITY

It is the responsibility of boat owner and master of the vessel to remain informed about and comply with the conditions of and any changes to MYC's Aquatic Event Authority issued by Marine Safety Queensland (MSQ) and available on the MYC website.

18. FOR FURTHER INFORMATION

If further information is required, members should contact a member of the MYC Sailing Committee or Board by phone or email. The following contact information for the MYC are:

MYC Office and Clubroom:

Address: Clubs' Precinct, Mooloolaba Marina 33-45 Parkyn Parade, Mooloolaba.

Mobile: 0413 227 013

Email: mooloolabayachtclub@bigpond.com

Postal address: PO Box 90, Mooloolaba QLD 4557

MOOLOOLABA YACHT CLUB

SAILING INSTRUCTIONS for SAILING SEASON 2024/2025

1. NOTICE TO COMPETITORS

Notices will be posted on the MYC website (see NOR clause 1) and/or MYC Facebook page.

2. CHANGES TO THE SAILING INSTRUCTIONS

For all MYC fleet races, any change to these Sailing Instructions will be posted no later than one (1) hour before it will take effect, except that any change to the schedule of races will be posted by 2000 on the day before it will take effect. If required, oral changes to the SIs may be given on the water by radio on VHF 77 or as indicated by the OOD as per RRS 90.2(c).

3. SCHEDULE OF RACES

- 3.1 These Sailing Instructions apply to races Sunday Afternoon Members' Sail (SAMS), Blue Water Series (BWS), Women's Helm Series (WHS), Short Course Series (SCS) events in the current MYC Sailing Calendar. SAMS, BWS, WHS and SCS are pointscore series,
- 3.2 For additional Sailing Instructions for the Rivers Races see:
Attachment F - RIVER RACES – SUPPLEMENTARY SAILING INSTRUCTIONS
- 3.3 The scheduled sign-on times will be in the MYC Sailing Calendar. Warning Signal times are stipulated in the Supplementary Sailing Instructions (SSIs).

4. CLASS FLAGS

Division 1	Numeral Pennant 1	Open Monohull
Division 2	Numeral Pennant 2	Open Non-Spinnaker
Division 3	Numeral Pennant 3	Open Multihulls
Division 4	Numeral Pennant 4	Cruising Division combined

Classes may be combined.

5. RACE CANCELLATION

- 5.1 Races will only be cancelled due to weather or sea state after careful consideration of current and predicted weather, sea and Mooloolah River bar conditions and their likely impact on the course area.
- 5.2 Racing will not occur if there is a current Gale Wind Warning (34 – 47 knots) or stronger.
- 5.3 The OOD shall monitor the current weather conditions, wind speed and forecasts prior to and throughout the race. The OOD shall postpone or abandon racing if, before or during a race a review of well-respected weather forecasting sources indicates a significant risk of severe storms or sustained wind speeds of 26 knots or more within the race area during the racing period. During the race the OOD may shorten or abandon a race if changing forecasts, weather conditions or sea state indicate potentially dangerous conditions.
- 5.4 The decision to race, postpone or abandon will not be made before Sign-On on the day of the race unless circumstances indicate that an earlier decision would be appropriate. This decision is not subject to protest. See also NOR 14.
- 5.5 The SC will decide which postponed races will be resailed and when. Appropriate amendments will be made to the Sailing Calendar which will be published to the MYC website.

6. THE COURSES

Courses will be designated in Attachment D of the Supplementary Sailing Instructions (SSIs).

7. MARKS

LAI D MARKS

Mark A	Laid approximately upwind of the start line at a distance and bearing that may be displayed by the start boat. Mark A will only be laid if a red or green rounding direction flag is displayed.
Mark N	Laid at least 0.45 Nm from the Port Beacon (Beacon no 2) on the transit of the outer Port and Starboard Marks on the retaining walls of the Mooloolah River at approximately 26° 40.293' S 153° 08.084' E .
Mark D	Laid approximately 150m inside Mark N on the transit of the outer Port and Starboard Marks on the retaining walls of the Mooloolah River at approximately 26° 40.372' S 153° 08.062' E
Noosa	Laguna Bay at approximately 26° 22.200' S 153° 05.550' E

FIXED MARKS

As per the Conditions of the Aquatic Permit granted to MYC by Marine Safety Queensland (MSQ) all vessels must remain at least 20 metres from all navigational marks.

Gneerings ECM	26° 39.280' S 153° 12.940' E
North West Fairway (NWF)	26° 48.721' S 153° 10.622' E
Mooloolaba Waverider Buoy (MWB) (situated off Coolum)	Position approximately 26° 33.960' S 153° 10.870' E . Updated locations available from – http://www.qld.gov.au/environment/coasts-waterways/beach/waves-sites/mooloolaba/
North Moreton Bay Waverider Buoy (NMWB)	Position approximately 26° 53.910' S 153° 16.730' E Updated locations available from – http://www.qld.gov.au/environment/coasts-waterways/beach/waves-sites/north-moreton-bay/
Caloundra Waverider Buoy (NMWB)	Position approximately 26° 50.855' S 153° 09.340' E Updated locations available from – https://www.qld.gov.au/environment/coasts-waterways/beach/monitoring/waves-sites/caloundra/
Flinders Reef NCM	Position approximately 26° 58.212S 153° 29.405E
<p>Mudjimba Island is surrounded by submerged reefs and bombies. In order to protect the reef from boats anchoring on the reef, the locations of the 5 Reef Protection Markers (RPMs) were promulgated by the Notice to Mariners 365 of 2024. Issued by Brisbane Maritime Region on 19 July 2024.</p> <p>The table below shows the promulgated GPS locations and their relative position to Mudjimba Island</p>	

Mudjimba Island, Reef Protection Markers	Markers 1 – 5, start south of the island, progress westerly and north. There is no eastern marker.		
Number	Latitude	Light	Position relative to Mudjimba Island
1	26° 37.0053' S 153° 06.8185' E	Fl Y 4.0s	S
2	26° 36.9455' S 153° 06.7407' E	Fl Y 4.0s	SSW
3	26° 36.9132' S 153° 06.6826' E	Fl Y 4.0s	W
4	26° 36.8033' S 153° 06.6683' E	Fl Y 4.0s	NW
5	26° 36.7158' S 153° 06.7709' E	Fl Y 4.0s	N

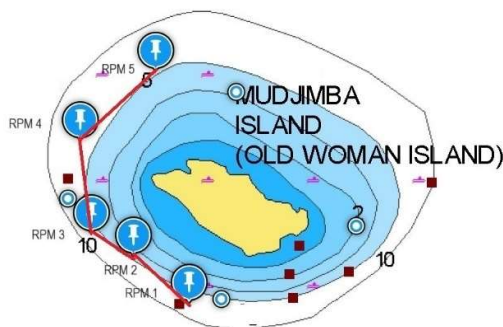
These RPMs should now be considered as Navigation Marks, and these points and the areas bounded by a virtual line passing through these points should now be defined as an OBSTRUCTION as defined in Definitions of AS RRS 2021-2024.

Mudjimba Island (Island) is included as a turning point in several sailing courses (see **Attachment D – Courses**).

When rounding or circumnavigating Mudjimba Island all boats must not sail closer than 20m from these RPMs and a virtual line between them (See diagram below)

NB there is no eastern RPM, therefore, MYC highly recommends staying outside the Mudjimba Island East GPS coordinates: 26° 36.900' S | 153° 07.050' E

The Latitude/Longitude co-ordinates are approximate only. All GPS locations are in DDD.MM.MMM format. WGS Datum 84



Mark Rounding Time: The OOD may require each boat to record its Mark Rounding Time. The Mark Rounding Time should be taken when the boat completes the rounding as the stern of the boat passes the rounding mark in the direction of the course to the next / finish mark.

8. THE RACE START / FINISH

8.1 For SAMS, and WHS races, fleet start times will be as follows:

From 01 September – 31 March (Summer Season): a fleet start for all boats at 1230.

From 01 April – 31 August (Winter Season): a fleet start for all boats at 1200.

The OOD may vary fleet start times if tidal levels are not favourable for bar crossing.

8.2 Boats whose warning signal or handicap start time has not been made shall avoid the starting area during the starting sequence for other races.

- 8.3 The Start-Finish Line for SAMS, WHS, will be between the laid buoys on Mark N and Mark D. **Otherwise, if Mark D is not laid, the Start-Finish Line will be between the laid buoy on Mark N and a virtual Mark D as designated by its GPS position as stated in clause 7 of these SIs. If both Mark N and Mark D are not laid the Start-Finish line will be between virtual Marks N and D.** Please note that Marks N and D may or may not be precisely on the transit line of Beacons 1 and 2 – this shall not be the subject of protest or dispute.
- 8.4 If, due to seas and wind conditions, Mark N pin has been significantly displaced from its original position, competitors should use the GPS coordinates as the finishing mark and finish as per clause 8.3.
- 8.5 Boats will finish the race by crossing the Start / Finish line from the direction of the course defined in the RRS.
Starting and Finishing directions in relation to Mark N are determined by the designated course chosen by the OOD and are tabled below.

First Mark	Mudjimba Island	Gneerings ECM	Mool'ba Waverider	NWF, NMWB, CWB, Flinders Reef NCM
Starting Direction	Mark N (s)	Mark N (p)	Mark N (p)	Mark N (p)
Finishing Direction	Mark N (p)	Mark N (s)	Mark N (s)	Mark N (s)

Note that finishing requires crossing the finishing line described in clause 8.3.

Only Leaving Mark N to port or starboard as described in this clause without crossing the Finish Line does not constitute finishing. Boats not crossing the Finish Line correctly will be designated NSC (Did Not Sail the Course), NSC = DNF.

The OOD may require each boat to record its **Mark Rounding Time** (Clause 7 – Fixed Marks).

- 8.5 For other fleet starts, where a Committee Vessel is present, the following will apply:
- All races will be started by using RRS 26, with the warning signal made five (5) minutes before the starting signal.
 - A boat that crosses the starting line more than 20 minutes after its starting signal will be scored DNS.
 - The starting line will be between a staff displaying an orange flag or shape on the Race Committee Vessel at the starboard end and the start Mark, being either a yellow pencil buoy or a red or orange buoy at the port end.
 - A starting limit mark may be laid near the starting line (though not necessarily on the line) or floated from the Race Committee vessel. This mark shall be left to starboard when starting and (for the purpose of the RRS) will be deemed to be a part of the vessel it protects.
 - When Mark A has been laid, the Race Committee vessel will signal the side on which this mark is to be passed by the display of a red flag - port or a green flag - starboard, at or prior to the warning signal.
 - Divisions can be started separately or together.
- 8.6 The Race Committee vessel may hold position using engines. This shall not be grounds for redress and amends RRS 62.1.

9. THE FINISH TIME

- 9.1 When there is no Race Committee vessel on station competitors shall take their own finish time in the format of "Hour: Min: Sec" EST by GPS. Competitors shall Sign-Off either:
- by radioing in their Finish Time on VHF 77 to MYC Radio Base,
 - or as indicated by the OOD to MYC Race Control,
 - or by sending a Text Message (SMS) to the OOD mobile as advised at sign on within 45 minutes of their Finish Time and no later than 15 minutes after the last boat finishes.
- 9.2 **Each boat in the race is required to act as a safety vessel for all other boats in that race if they require assistance. The second to last boat to finish shall wait for the last boat in the fleet to finish and assist to pick up the Laid Marks from the finish line.**

10. SHORTENED OR CHANGED COURSE:

- 10.1 While boats are racing, the OOD may advise boats by radio on VHF 77, or otherwise as indicated by the OOD), that the course is to be shortened or changed.
- 10.2 The OOD may change or remove a mark on the course (RRS 33). To assist with this decision the OOD may request position and sailing conditions from boats sailing the course.
- 10.3 The OOD may advise to complete the course at the finish line as described or at any mark on the selected course. If a course is to be completed at a rounding mark each boat should record its Mark Rounding Time as described in Clause 7.
- 10.4 The OOD may require each boat to record its Mark Rounding Time at a specified Mark and later declare that Mark as the Finish of a shortened race. This changes the definition of Finish and RRS 32.

11. TIME LIMITS

The Time Limit for all races will be designated in the Attachments to these Sailing Instructions

12. PROTESTS AND REQUESTS FOR REDRESS

- 12.1 Protest forms are available from the MYC.
- 12.2 The protest time limit is 40 minutes after the finish time of the last boat in the last race of the day.
- 12.3 Protests shall be delivered to the MYC or the OOD before the end of the protest time limit.
- 12.4 Protest notices will be posted online not more than 48 hours after the end of the protest time limit to inform competitors of the time and place of a hearing to which they are a party or named as a witness.
- 12.5 Protests will be heard as soon as practicable, and in the approximate order of receipt.
- 12.6 For the purpose of RRS 64.4(b) the authority responsible is the MYC. The Protest Committee will be appointed by the OOD or the SC.
- 12.7 When Division Boats are scheduled to finish away from Mooloolaba, a boat intending to protest shall notify the Race Committee Vessel as soon as practicable after finishing and comply with the requirements of RRS 61.1. The completed Protest form must then be lodged with the MYC within 40 minutes from the finishing time of the last boat to complete the course.
- 12.8 Entrants are reminded of Fundamental RRS 4 – Acceptance of the Rules. The Race Committee looks to the competitors to enter the event in the right spirit, be meticulous in observing the rules and participate in a sportsmanlike manner.

13. ARBITRATION

Arbitration will be used in accordance with RRS Appendix "T".

The arbitrator may be a member of any subsequent jury or may give evidence to the jury.

14. SAFETY REGULATIONS

- 14.1 All boats shall lodge a certified Australian Sailing (AS) Special Regulations Equipment Audit Form covering the appropriate safety category prior to racing in any event. Boats failing to comply with this requirement will be scored DNS
- 14.2 The current standard for life jackets is Australian Standard 4758 (AS 4758.1) was introduced in 2008 and updated in August 2015. Any of the following standards are acceptable provided the lifejacket is in good condition and does not rely solely on oral inflation for buoyancy:

Under AS 4758.1	Under IS 12402	Under EN standard	Under NZ standard
Level 275 Level 170 Level 150 Level 100	ISO 12402-1 – Lifejacket for seagoing ships ISO 12402.2 level 275 ISO 12402.3 level 150 ISO 12402.4 level 100	EN 399-1993 lifejacket 275N EN396-1993 lifejacket 150N EN395-1993 lifejacket 100N	NZS 5823:2005 type 401

In accordance with AS Special Regulations Part 1 Section 3.12.1 Where lifelines are not fitted to a multihull or are not continuous, Section 13.2.1 shall apply.

In accordance with AS Special Regulations Part 1 Section 5.01.1 j: On a boat without lifelines complying with 3.12, a lifejacket complying with 5.01.1(i), shall be worn by each member of the crew while on deck.

- 14.3 **A boat retiring from a race shall notify the OOD as soon as practicable and prior to leaving the course.**

Attachment A SUPPLEMENTARY SAILING INSTRUCTIONS FOR SAMS and WHS EVENTS

Sign-on: As per the current Sailing Calendar or as otherwise specified. All boats must sign on by radio or in person **no later than half an hour** after the Sign-On time of 1130 (Summer Season) and 1100 (Winter Season).

Race Start: From 01 September – 31 March: a fleet start for all boats at 1230
From 01 April – 31 August: a fleet start for all boats at 1200

A Starting Sequence may or may not be announced by the OOD by radio on VHF 77 or as indicated by the OOD.

Start & Finish Line: As per clause 8

Course: The course to be sailed will be selected by the OOD from the courses in Attachment D and notified at the time of Sign-On.

Sign-off As per clause 9.1

Finish: As per clause 9.1

Time Limit: The time limit for all Courses will be:
1700 for dates between 01 September – 31 March.
1630 for dates between 01 April – 31 August.

The courses may be shortened or changed by the OOD on the day at time of Sign On.

Attachment B - SUPPLEMENTARY SAILING INSTRUCTIONS FOR BLUE WATER SERIES (BWS).

Briefing & Sign-on:

As per the Sailing Calendar a briefing will be held at the MYC Clubroom at 0800 hours. The skipper or a representative from each boat must sign on in person with the OOD prior to the Briefing.

Safety Category: AS Safety Category 4.

Race Start: Race warning signal not before 0855 hours

Start Line: Between the Race Committee Vessel and the start/finish mark as per clause 10.4. If there is no Race Committee Vessel, the Start will be as per Clause 10.3

Courses: Courses as per Attachment D - Blue Water Series. Note re Mark A – If Mark A is to be used the Committee Boat will display a red or green flag indicating rounding direction. If a red or green flag is not displayed, Mark A is not part of the course.

Time Limit: Sunset for each BWS race. Refer to the Sailing Calendar for sunset time for each scheduled race. The sunset time will be confirmed at the 0800 briefing.

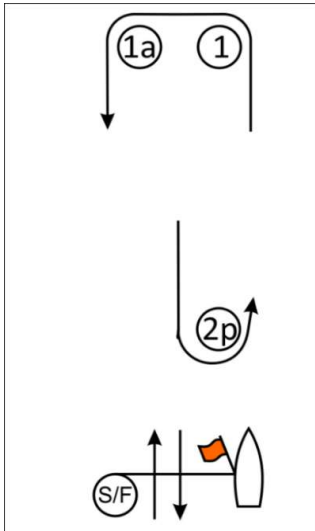
Finish Line: As per clause 8

Finish: As per clause 9.1

Attachment C - SUPPLEMENTARY SAILING INSTRUCTIONS FOR SHORT COURSE RACES

Courses to be sailed will be determined by the OOD from the course list.
The intended course to be sailed will be displayed on the Race Committee Vessel. Distance and Bearing to first Mark may also be displayed.

Course W1:	Divisions 1 – 3:	Start, 1(p), 1a(p), Finish
Course W2:	Divisions 1 – 3:	Start, 1(p), 1a(p), 2(p), 1(p), 1a(p), Finish
Course W3:	Divisions 1 & 3:	Start, 1(p), 1a(p), 2(p), 1(p), 1a(p), 2(p), 1(p), 1a(p), Finish
	Division 2:	Start, 1(p), 1a(p), 2(p), 1(p), 1a(p), Finish



Time limit: 90 minutes for all Short Courses.

Course Leg Length

Minimum: 0.7 nautical miles. Maximum: 1.2 nautical miles.

Target Duration: 45 – 90 minutes *

Note *: Dependent on the prevailing wind conditions on race day.

NOTES:

Mark 1a may not be included.

If Mark 2p is not laid, Pin mark S/F will be the leeward rounding mark.

Attachment D - SUPPLEMENTARY SAILING INSTRUCTIONS - COURSES

BAY COURSES FOR SAMS, WHS, WAMS, EVENTS

Note re mark A – If Mark A is to be used it will be the first Mark, laid approximately upwind of the start line and the Committee Boat will display a red or green flag indicating rounding direction. If a red or green flag is not displayed, Mark A is not Part of the course.

1	Start, Island (p), Finish. Distance – approx. 8nm
2	Start, Gneerings (p), Finish. Distance – approx. 10nm
3	Start, Gneerings (p), Island (p), Finish. Distance - approx. 15nm
4	Start, Waverider (p), Finish. Distance - approx. 14nm
5	Start, Waverider (p), Island (p), Finish. Distance - approx. 16nm
6	Start, Island (p), Mark N(p), Island (p), Finish. Distance - approx. 16nm
7	Start, Island (p) Mark N (p), Gneerings (p), Finish. Distance - approx. 17nm
8	Start, Gneerings (p), Waverider (p), Finish. Distance – approx. 17nm
9	Start, Gneerings (p), Mark N(p), Gneerings (p), Finish. Distance - approx. 18nm
10	Start, North West Fairway(p), Finish. Distance – approx. 18nm
11	Start, Circumnavigation Island (p), Finish. Distance – approx. 9nm
12	Start, Gneerings (s), Northwest Fairway (s), Finish – approx. 23nm
13	Start, Gneerings (p), Waverider (p), Island (p), Finish – approx. 19nm

Finish Time: **For all Bay Courses as SSIs attachments A and B.**
Boats not finishing by that time will be scored DNF.

COURSES FOR BLUE WATER SERIES (BWS)

14	Fairway: Start, Mark A, Gneerings (p), Waverider (p), NWF (p), Gneerings (p), Finish. Distance – approx. 39nm.
15	Fairway Shortened: Start, Mark A, Gneerings (s), NWF (s), Finish. Distance – approx. 23nm.
16	Noosa Bay: Start, Mark A, Mudjimba Is (s), Noosa (s), Mooloolaba Waverider (s) Finish. Distance - approx. 41nm.
17	Noosa Bay Shortened: Start, Mark A, Mudjimba Is (s), Noosa (s) - Record Mark Rounding Time. Distance - approx. 18nm.
18	Waverider Challenge: Start, Mark A, North Moreton Bay Waverider (s), NWF (s), Mooloolaba Waverider (p), Finish. Distance - approx. 44nm.

19	Waverider Challenge Shortened: Start, Mark A, North Moreton Bay Waverider (s), NWF (s), Finish. Distance - approx. 32nm.
20	Start, Mark A, NWF (p), Gneerings (p), Island (p), Finish. Distance - approx. 29nm.
21	Start, Mark A, NWF (p), Gneerings (p), Waverider (p), Finish. Distance – approx. 31nm.
22	Start, Mark A, Gneerings (p), Waverider (p), Island (p), Gneerings (s), Finish. Distance - approx. 26nm
23	Start, Mark A, North West Fairway(p), Gneerings (p), Waverider (p), Island (p), Finish. Distance – approx. 33nm.
24	Southern Waverider Challenge: Start, Mark A, North West Fairway(s), Caloundra Waverider (p), North Moreton Waverider (p), Finish between Mark D and Mark N. Distance - approx. 34nm
25	Southern Waverider Challenge Extended: Start, Mark A, North West Fairway(s), Caloundra Waverider (p), North Moreton Waverider (p), Gneerings (p), Finish between Mark D and Mark N. Distance – approx. 38nm
26	Flinders Reef: Start, Mark A, Flinders Reef NCM (s), Finish between Mark D and Mark N. Distance - approx. 52nm.

Reverse Courses:

Where "R" is added to the course number, the order of course marks and direction of rounding of marks is to be reversed. (Except for Mark A which will always be the first Mark and rounding will be as displayed.)

Time Limits:

Time limits during winter sailing months will be limited by sunset times. Sunset times for each Blue Water Race are stated in the Sailing Calendar. All boats must have completed the course by sunset. When a boat determines that it will not complete the course by sunset it should inform the OOD of its retirement and return home as early as practicable.

Attachment E - RIVER RACES - NOTICE OF RACE

1. VENUE

Racing will be conducted by the Mooloolaba Yacht Club on the waters of Mooloolah River.

2. BOATS AND SAILS

2.1 The Event will be sailed in Elliott 6s.

2.2 Up to four boats may be provided.

2.3 One mainsail, one jib will be provided with each boat. Initially this will be a non-spinnaker series.

2.4 Boats will be allocated to teams by random draw.

3. ELIGIBILITY AND ENTRY

3.1 Events are open to members of MYC, or other organisations affiliated with Australian Sailing (AS).

3.2 The OA may, for some events, designate only MYC Members shall skipper a boat.

4. SCHEDULE

The schedule of races will be posted on the Regatta Notice Board in the vicinity of sign-on and will be dependent on prevailing sailing conditions and the number of teams entered. The OOD may change the format, terminate or eliminate any round when conditions don't allow the completion of the intended format.

5. NOTICE TO COMPETITORS

Notices will be posted on the Regatta Notice Board in the vicinity of sign-on.

6. SAILING INSTRUCTIONS

Supplementary Sailing Instructions (SSIs) will be issued in the MYC Notice of Race (NOR) and Sailing Instructions (SIs) 2024 -25.

These SSIs will be published and will be available on the [MYC Website](#).

7. COURSES

The Courses will be defined at the Regatta Notice Board at sign-on

8. SCORING

The Scoring System will be displayed on the Regatta Notice Board in the vicinity of sign-on. Scoring may be for the day's / evening's racing or may include an overall score for the regatta or series.

9. PRIZES

Prizes may be awarded at post-race presentations appropriate to entries received on the day.

10. Competitors are reminded that this is a FUN event and if any contact between boats causes any injury or damage then both boats shall immediately retire.

Attachment F - RIVER RACES - SUPPLEMENTARY SAILING INSTRUCTIONS

1. CHANGES TO THE SAILING INSTRUCTIONS

- 1.1 Any change to these Supplementary Sailing Instructions will be posted no later than fifteen minutes (15) minutes before it will take effect.
- 1.2 All changes to sailing instructions will be posted on the Regatta Notice Board in the vicinity of sign-on.

2. THE START

- 2.1 Races may be started as follows or amended and posted on the Regatta Notice Board:

Minutes before starting signal	Visual Signal (Flag)	Sound Signal	Meaning
2	Numeral 1 Up & Numeral 2 UP	One	Warning Signal
1	Numeral 2 Down	One	Preparatory Signal
0	Numeral 1 Down	One	Starting Signal

- 2.2 Course buoys will be **ORANGE** in colour or as posted on the Regatta Notice Board.
- 2.2 The starting line may be between two orange buoys, or between the Start Boat and an orange buoy or as described on the Regatta Notice Board.
- 2.3 The starting signals will be made from the Start Boat or otherwise as described on the Regatta Notice Board.

3. THE COURSES

The Courses will be defined at the Regatta Notice Board at sign-on

4. SCHEDULE

The schedule of races will be posted on the Regatta Notice Board in the vicinity of sign on. The OOD may change the format, terminate or eliminate any round when conditions do not allow the completion of the intended format.

5. THE FINISH

The finish line will be as described on the Regatta Notice Board.

6. TIME LIMITS

Time limits for all races will be displayed on the Regatta Notice Board.

7. PENALTY SYSTEM

The OOD may appoint an umpire to adjudicate on races, the umpire's decision is final, and no redress or protest will be received.

8. SCORING

The Scoring System will be displayed on the Regatta Notice Board in the vicinity of Sign On. Scoring may be for the day's events or may include an overall score for the regatta or series.

9. PROTESTS AND REQUESTS FOR REDRESS

This is a FUN regatta and protests will not be heard or redress given.

Entrants are reminded of RRS Part 1 - Fundamental Rules 4, Acceptance of the Rules. The Race Committee looks to the competitors to enter the event in the right spirit, be meticulous in observing the rules and participate in a sportsmanlike manner.

10. SAFETY REGULATIONS

The wearing of a Personal Flotation Device complying with PDF Type 1(AS 4758) 150N or PDF Type 2 (AS 4758) 50N or equivalent overseas standard by all crew members is **mandatory** at all times while afloat except briefly while adjusting clothing or equipment on boats. (Refer AS Special Regulations Part 2 For Off The Beach Boats - 5.01 Personal Flotation Devices)